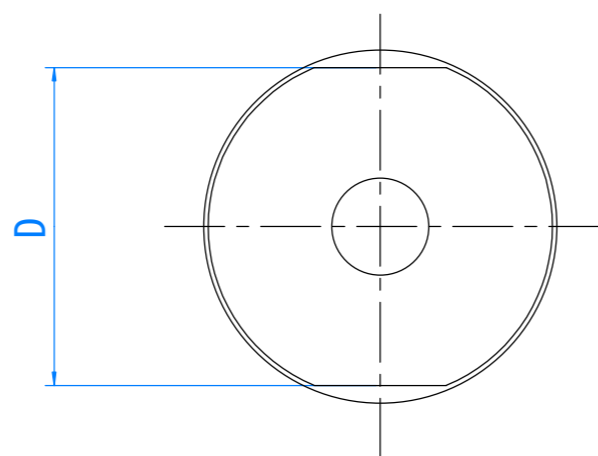
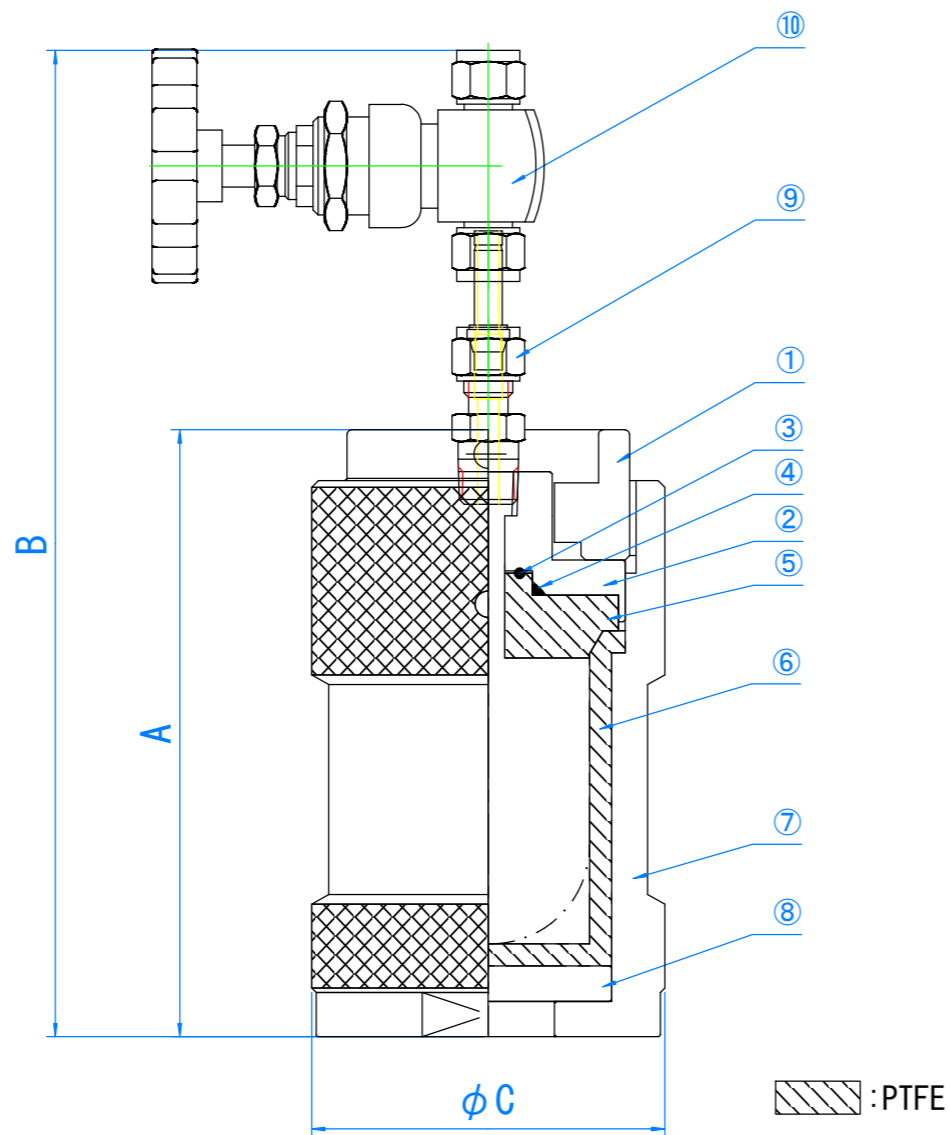


- Model RDV-B-25
A: (109) B: (191) C:59 D:50
- Model RDV-B-50
A: (118) B: (202) C:68 D:60
- Model RDV-B-100
A: (138) B: (224) C:80 D:72
- Model RDV-B-250
A: (232) B:318 C:80 D:72

[mm] (): approx.



No.	名称	材質	個数	備考
①	Screw Cap	SUS304	1	RDVS-B-***CAP
②	Head	SUS304	1	RDVS-B-***HEAD
③	O-ring	FFKM	1	sold separately
④	O-ring	FFKM	1	sold separately
⑤	Wetted parts	PTFE	1	RDVT-B-***CAP
⑥	PTFE Bottle (Flat or Round bottom)	PTFE	1	HUT-***BD/RDVT-250BD
⑦	Cylinder	SUS304	1	RDVS-B-***BD
⑧	Bottom Plate	SUS304	1	RDVS-B-***BP
⑨	Connector	SUS316	1	R1/4-φ1/4in (sold sepalately)
⑩	Needle Valve	SUS316	1	sold separately
⑪	*	*	*	*
⑫	*	*	*	*
⑬	*	*	*	*
⑭	*	*	*	*
⑮	*	*	*	*
⑯	*	*	*	*
⑰	*	*	*	*
⑱	*	*	*	*
⑲	*	*	*	*
⑳	*	*	*	*

※It is not a high-pressure gas vessel.
 ※If a state of wetted parts is bad,
 it may leak before the maximum use pressure.
 ※There is no sealing at the time of normal temperature.
 ※If there are many plumbing parts to connect,
 it may not arrive at the maximum temperature by heat radiation.

Maximum temperature	200 °C
Maximum pressure	10 MPa
Volume	25/ 50/ 100/ 250 ml approx.

[mm]

SAN-AI KAGAKU CO.,LTD.

TITLE
 Model: RDV-B series
 Sealed Decomposition Vessle
 (Solid-liquid extraction type)

SIZE	CAGE CODE	DWG NO	REV
------	-----------	--------	-----

A3

03. 2024

SCALE

SHEET